 Study Area

**Figure 1:
Project Location Map**

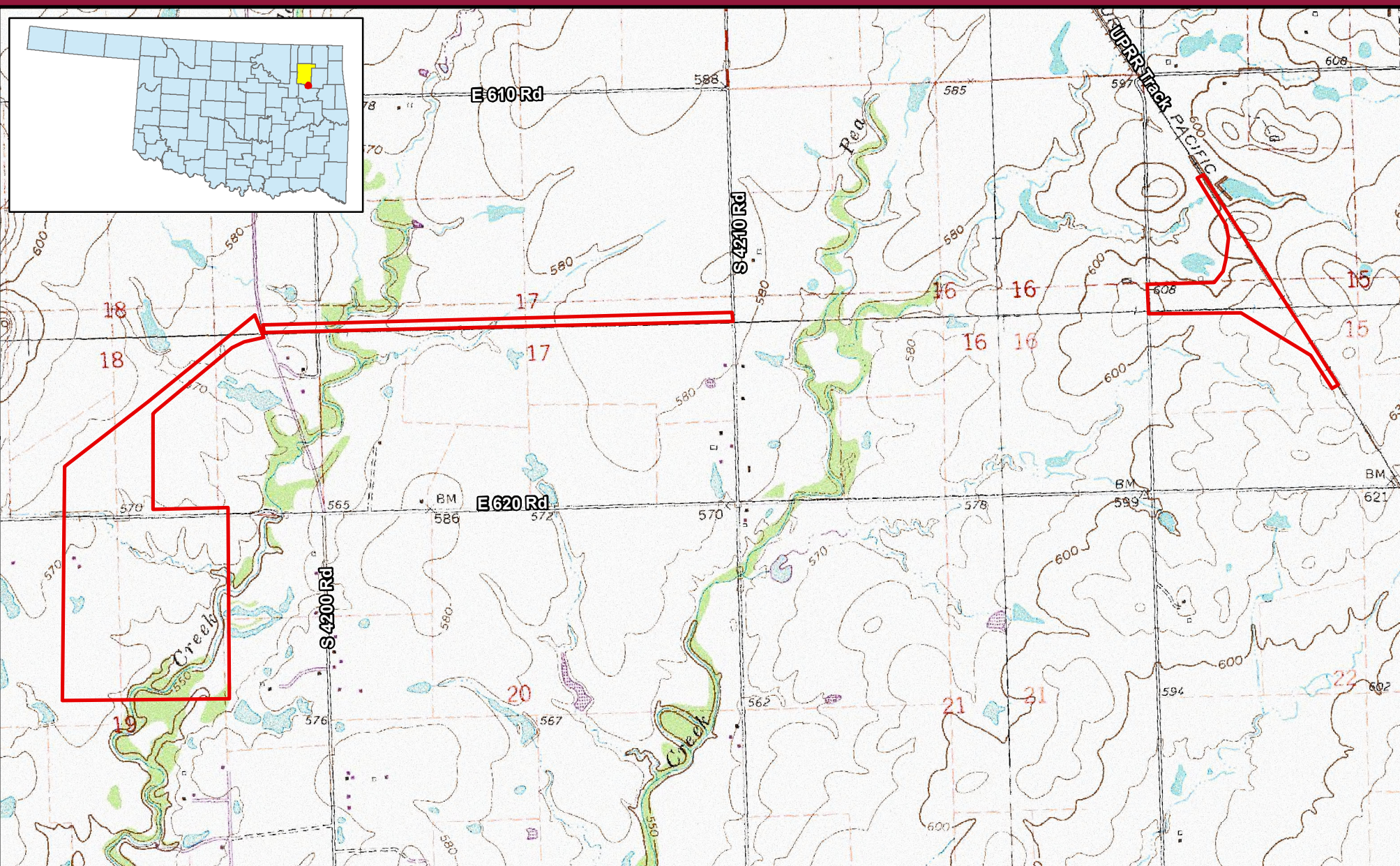



0 0.25 0.5 Miles



Date: October, 2020

Port of Catoosa Inola Industrial Rail Facility
Rogers County, Oklahoma
Section: 15, 17, 18, and 19
Township: 19 North, Range: 17 East
Aerial Source: NAIP 2019 Imagery: Rogers County



 Study Area

**Figure 2:
Topographic Map**



0 0.25 0.5 Miles



EXPERIENCE | Transportation

Date: October, 2020

Port of Catoosa Inola Industrial Rail Facility

Rogers County, Oklahoma

Section: 15, 17, 18, and 19

Township: 19 North, Range: 17 East

USGS 1:24,000 7.5 Minute Series Topographic Quadrangle:
Inola, Chouteau NW, Catoosa SE, Neodesha